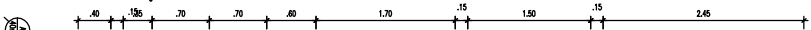
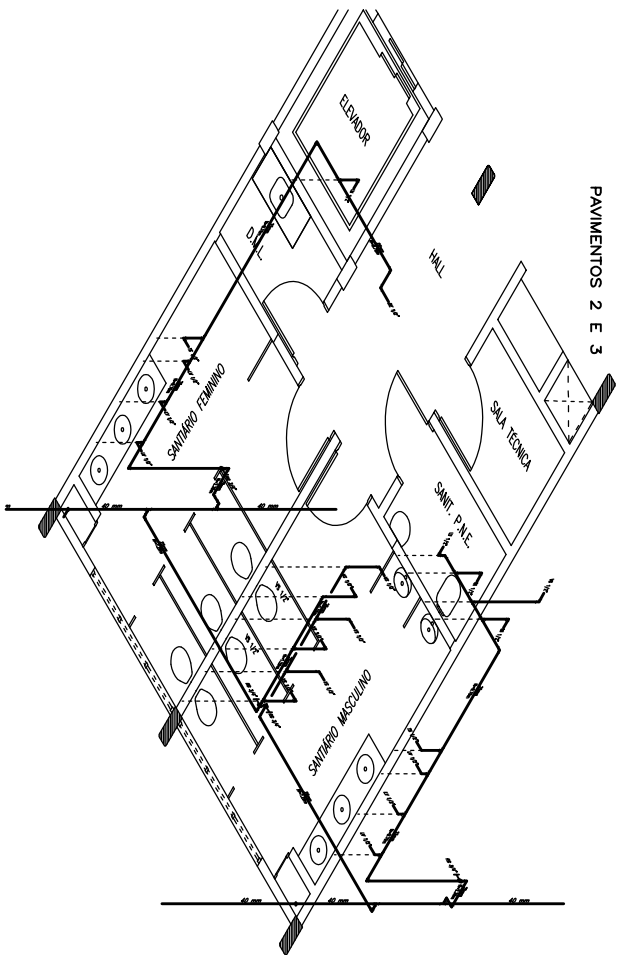
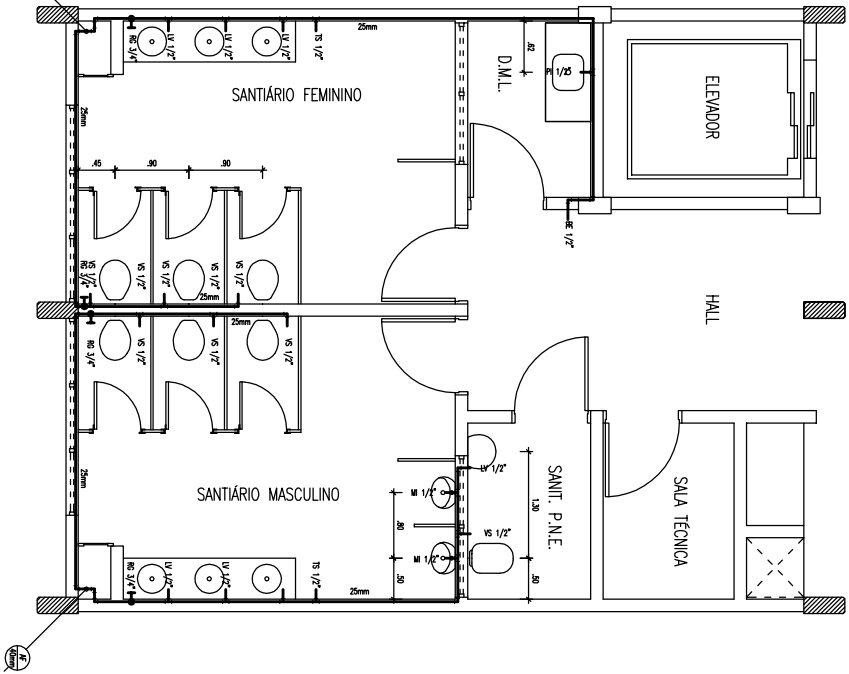


PAVIMENTOS 2 E 3



PAVIMENTOS 2 E 3



UNIVERSIDADE FEDERAL DO AMAZONAS

Prefeitura da UFAM

UNIVERSIDADE DE BRASÍLIA - SEDE SUL

RESOLUÇÃO Nº 10.000/2018

PAVIMENTOS 2 E 3

02.HI.008